

RA TEKNİK

Vakum sistemleri San ve Tic Lt Şti

Office:+02126690815 Istanbul / TURKEY



NINGBO BAOSI ENERGY EQUIPMENT CO.,LTD.

ADD: NO.55 Juchao Rd, Jiangkou Subdistrict, Fenghua District,

Ningbo, Zhejiang.

TEL: +86-574-88569588

FAX: +86-574-88569596

E-MAIL: bsvac@cnbaosi.com

罗茨式真空泵
ROOTS VACUUM PUMP



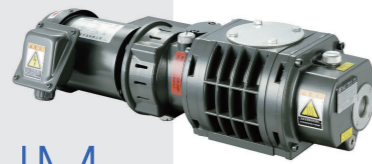
**THE ROOTS
VACUUM PUMP
USED FOR VACUUM
SOLUTIONS**

BAOSI 罗茨泵BSJ150L 中国制造		ROOTS PUMP BSJ150L MADE IN CHINA	
频率 FREQUENCY	50	60	Hz
抽气速率 PUMPING SPEED	150	180	L/s
转速 ROTATE SPEED	3000	3600	r/min
油量 OIL CAPACITY	1.6	1.6	L
电机功率 MOTOR POWER	2.2	2.2	kW
生产日期 DATE	15.06 制造编号 NO. AB0104		
宁波鲍斯能源装备股份有限公司 NINGBO BAOSI ENERGY EQUIPMENT CO.,LTD.			

ROOTS VACUUM PUMP

CHARACTERISTICS

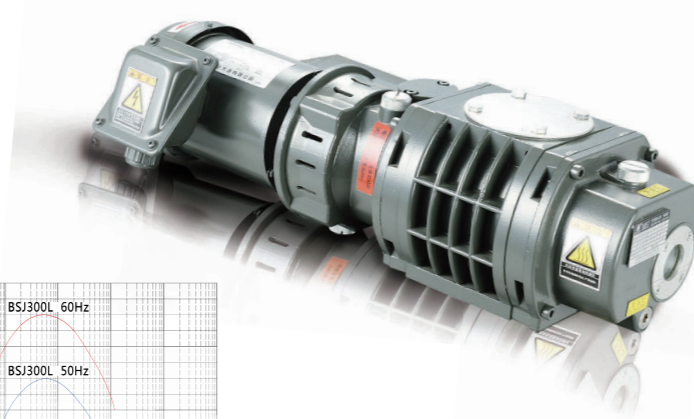
- 01 The use of oil-free intermediate seal, multiple sealed way to ensure the high clean vacuum environment in the rotor chamber.
- 02 Advanced processing to ensure the good geometrical symmetry of the rotors, as well as low noise and long service life.
- 03 The whole rotors is made of aluminium alloy which has the characteristics of fast cooling corrosion resistance and energy-efficient.
- 04 Special shaft seal is used to achieve the long stable running without oil leakage .
- 05 Compact structure,light weight,and small volume.



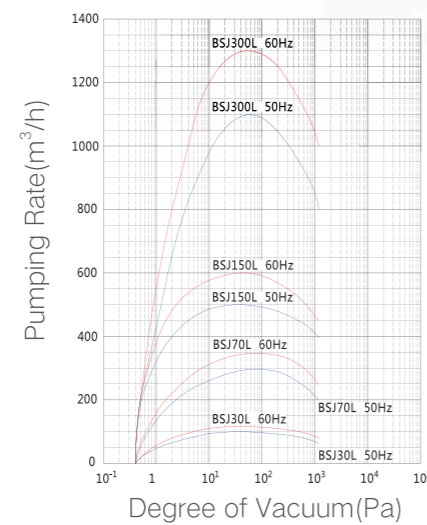
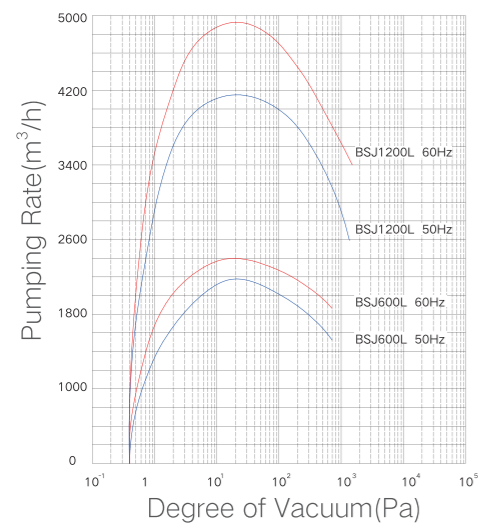
Model		BSJ30L	BSJ70L	BSJ150L	BSJ300L	BSJ600L	BSJ1200L	
Pumping Rate	m ³ /h(L/min)	50 Hz	100(1667)	280(4670)	500(8330)	1000(16667)	2000(33330)	4140(69000)
		60 Hz	120(2000)	330(5500)	600(10000)	1200(20000)	2400(40000)	4985(83083)
Max Intake Pressure (continuous operation)	Pa	50 Hz	1.2 × 10 ³		1.3 × 10 ³		8.0 × 10 ²	
		60 Hz	9.3 × 10 ²		1.1 × 10 ³		6.7 × 10 ²	
Max allowed differential pressure	Pa	50 Hz	4.0 × 10 ³		7.3 × 10 ³		5.6 × 10 ³	
		60 Hz	3.3 × 10 ³		6.0 × 10 ³		4.7 × 10 ³	
Ultimate Pressure	Pa	4 × 10 ⁻²						
Motor Power(2P)	kW	Three Phase	0.4	0.75	2.2	3.7	7.5	11
Voltage	V	Three Phase	380, 400					
Oil Needs	L		0.4	0.8	1.6	2.0	4.0	-
Vacuum Pump Oil	-		BSO-46					
Gear-side Cover	L		-	-	-	-	-	3.5
Motor-side Cover	L		-	-	-	-	-	6.5
Sealed oil chamber	L		-	-	-	-	-	1.5
Flow Rate	L/min	Flow	-	2	2	3	3	6
	MPa	Differential Pressure	0.1					
	°C	Water Temp.	5~30					
Inlet	-		VG50	VG80	VG80	VG100	VG200	ISO250
Outlet	-		VF50	VF80	VF80	VF80	VF200	ISO100
Ambient Temp.	°C		5~40					
Weight	kg		30	51	80	115	227	420

Note:

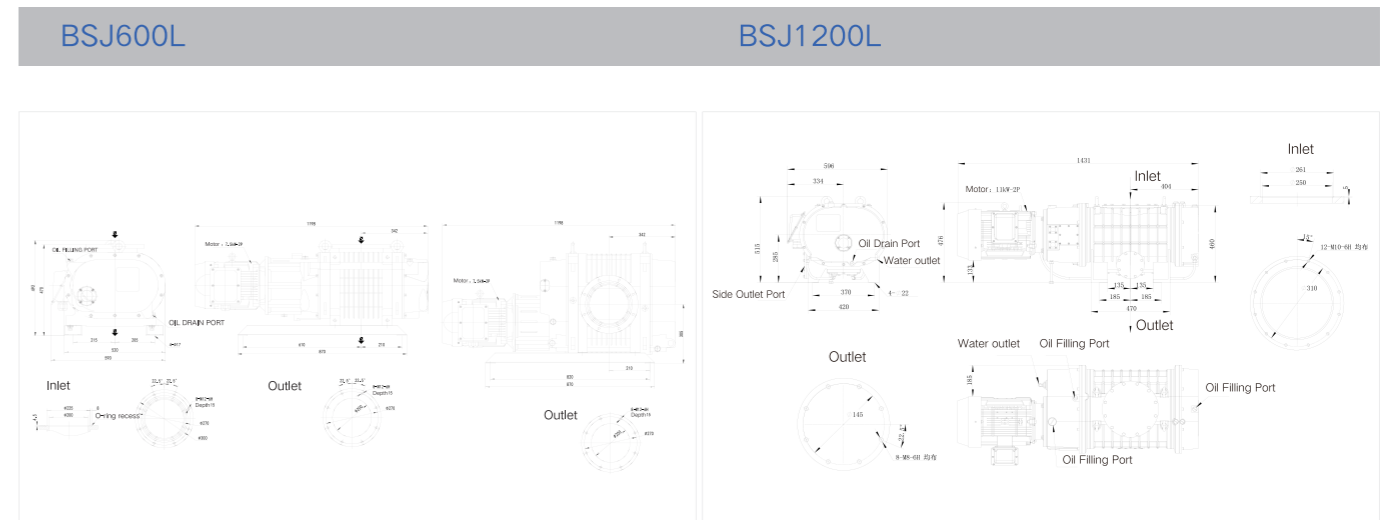
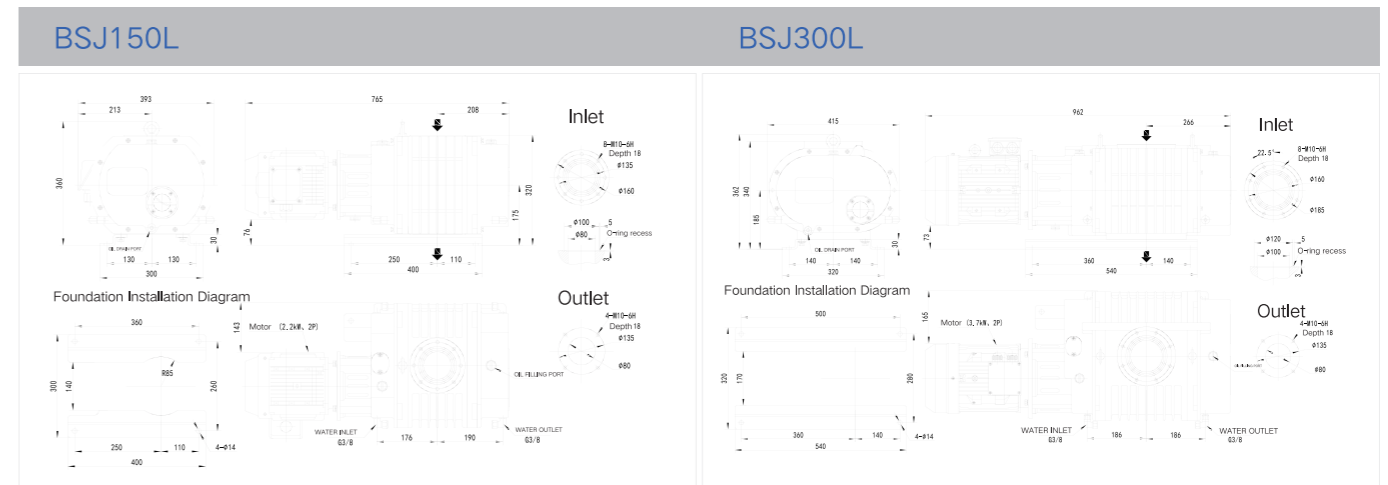
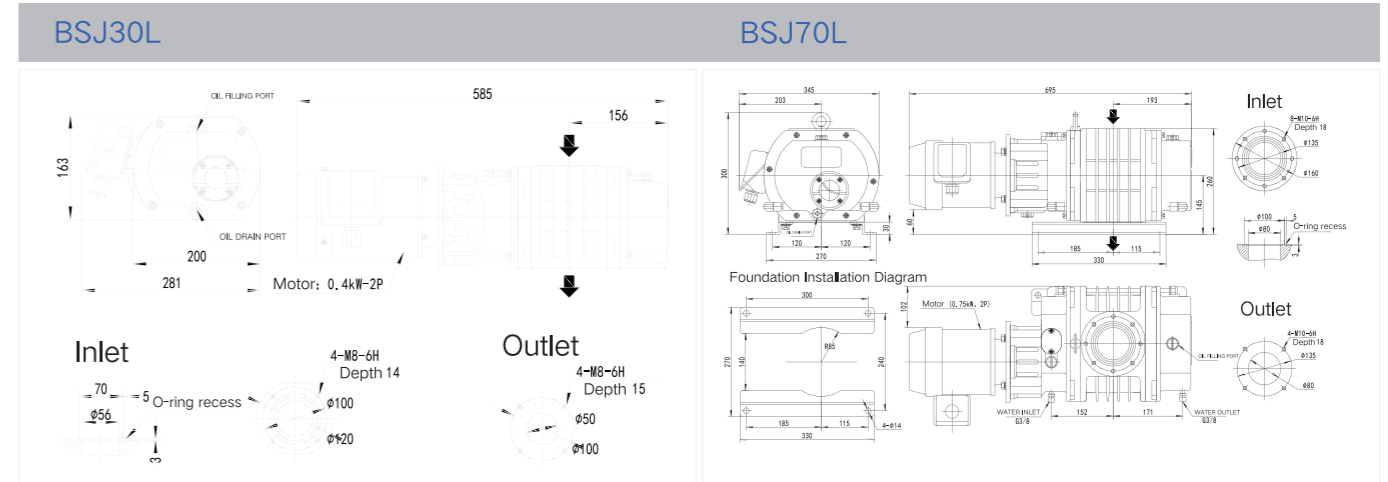
The value of 'ultimate pressure' in the sheet is measured by Pirani gauge when the Baosi special pump oil is used, and the value should be 4X10⁻³, if the Mcleod gauge is used.



Power supply 380v; Vacuum gauge: Pirani gauge
Vacuum pump oil: Special oil BSO-46



Installation Diagram of Roots Pump



VACUUM PUMP SYSTEM



APPLICATIONS

- Evaporation coating, sputtering coating, ion planting, optical coating etc.
- Single crystal furnace, polycrystalline furnace, vacuum heat treatment furnace, sintering furnace, annealing furnace, hardening furnace etc.
- Vacuum drying, freeze drying, leaking detection equipment and system, gas recovery system, LC injection etc.
- Refrigerator, air conditioners, central air-conditioning, LED, Back light automatic pumping line, exhaust equipment etc.

OIL MIST FILTER

When the oil rotary vacuum pump is operated at atmospheric pressure or under low vacuum, the oil will be discharged together with the gas which has been pumped. This kind of exhaust gas is composed of many tiny oil droplets, and exhausted in the form of smoke through the pump outlet. The oil mist filter is used to ensure a clean environment to protect the equipment from oil mist pollution.



Technical Parameter of Roots Pump System

Parameter		Model		JZ150C	JZ300H
		JZ30A	JZ70A		
		JZ30B	JZ70B	JZ150D	
		JZ30C	JZ70C		
		JZ30D	JZ70D		
Ultimate Pressure (Pa)		4×10^{-2}			
Combinations	Roots Pump	BSJ30L	BSJ70L	BSJ150L	BSJ300L
	OIL ROTARY	BSV30	BSV30	BSV60	BSV275
		BSV40	BSV40		
		BSV60	BSV60		
	BSV90	BSV90	BSV90		
Motor (kW)	Roots Pump (2P)	0.4	0.75	2.2	3.7
	Oil Rotary Pump (4P)	1.1	1.1	2.2	7.5
		1.5	1.5		
		2.2	2.2		
	3.7	3.7	3.7		
Oil needs (L)	Standard oil of Roots pump	0.4	0.8	1.6	2
	Standard oil of Roots pump BSO-46				
	Standard oil of Oil Rotary pump	1.2 ~ 2.8 2.5 ~ 4.2	1.2 ~ 2.8 2.5 ~ 4.2	2.5 ~ 4.2	23 ~ 28
Standard oil of Oil Rotary pump BSO-68					
Cooling Water	Cooling Way	Roots Pump	-		Water Cooling
		OIL ROTARY	-		Water Cooling
	Water Pressure/In-Out Water Differential Pressure	-	$\leq 0.3\text{MPa}$ (Gage Pressure) /0.1MPa		
	Water Temp. (°C)	-	5 ~ 30		
	Water Yield (L/min)	-	2	4	6
Air Intake (O.D.)		VG50	VG80		VG100
Air Outlet (O.D.)		KF40			VG50
Options		① electric cabinet ② vacuum gauge ③ suction port flange ④ filter ⑤ switch of cooling water			

BSF SERIES OF OIL MIST FILTER

Model	BSF10	BSF30	BSF120
Filter Specification	10L	30L	120L
Maximum processing flow $\text{m}^3/\text{h}(\text{L}/\text{s})$	36(10)	108 (30)	432 (120)
Inlet	KF25	KF40	VF50
Outlet	KF25	KF40	G4
Pump	DRV10/DRV16/BSV24	BSV30/40 (high load)	BSV60/90 (underload)
Weight (kg)	1	7.4	40