

---

# RA TEKNİK

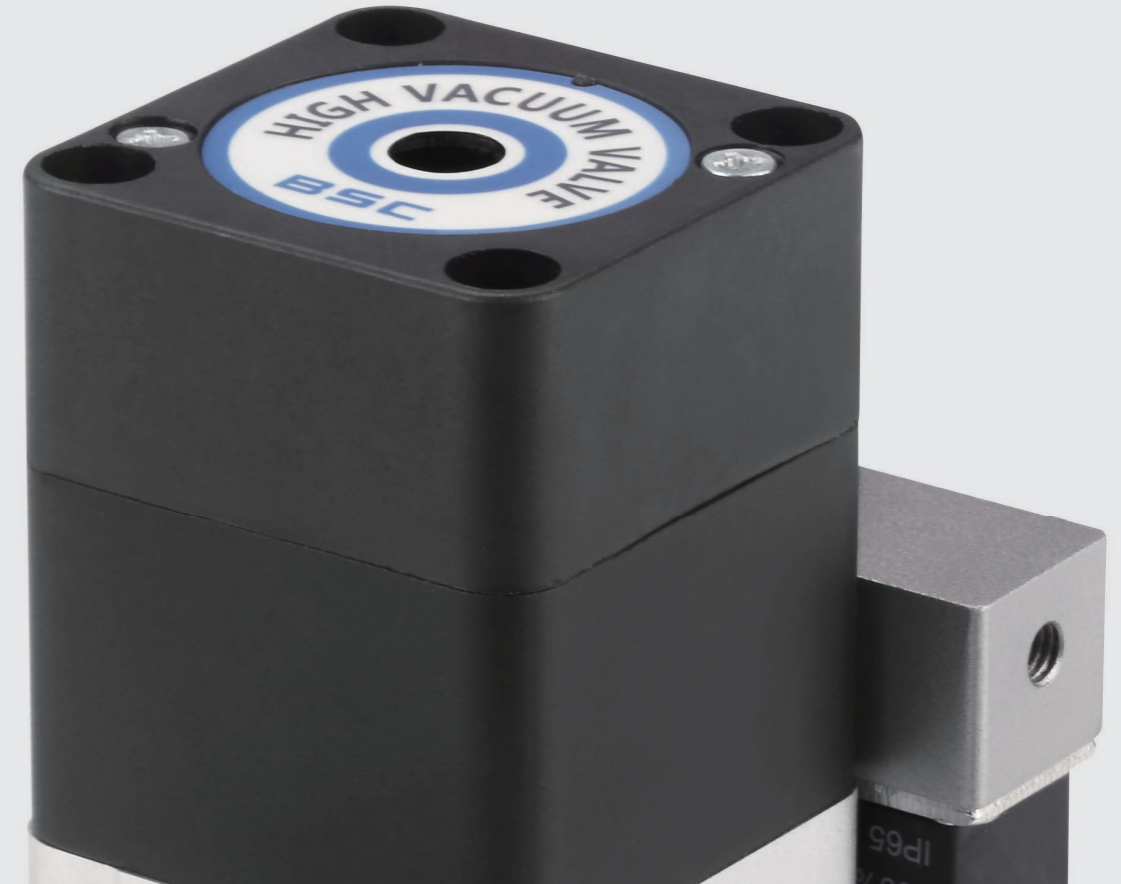
Vakum sistemleri San ve Tic Ltd Şti

Office:+02126690815 Istanbul / TURKEY

---



高真空挡板阀  
Hi-Vacuum Angle Valves



## HI-VACUUM ANGLE VALVES

THE ANGLE VALVES USED  
FOR HI-VACUUM SOLUTIONS

**NINGBO BAOSI ENERGY EQUIPMENT CO.,LTD.**

ADD: NO.55 Juchao Rd, Jiangkou Subdistrict, Fenghua District,

Ningbo, Zhejiang.

TEL: +86-574-88569588

FAX: +86-574-88569596

E-MAIL: bsvac@cnbaosi.com

# Hi-Vacuum Angle Valves

## INTRODUCTION

This valve is suitable for working medium with air and non-corrosive gas. It is used to cut or turn on the vacuum line and is one of the important components of the vacuum system. The hand wheel is turned by hand (manual) or compressed air (pneumatic) as the driving force and the mechanism is connected with valve plate to lift and lower, and the valve opening and closing action is completed.

## FEATURES

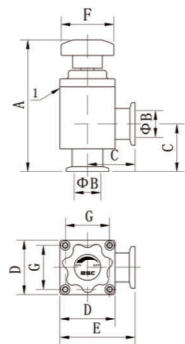
- Modular two-position three-way solenoid valve to realize quick combination by simple operation to meet different needs of customers.
- Dust-proof design for application with a small amount of dust.
- Dynamic seal with welding corrugated pipe in AM350 material for more than million times service life.
- The open/close position is mechanical micro switch, which is sensitive to reaction, reliable in output and strong in anti-interference.
- With mechanical position indication. • Easy to replace and repair. • Anodized surface of valve body.

## DIMENSIONAL DRAWING

### Manual Type



DNI16~50 Aluminum Body Manual



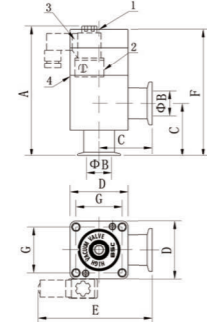
- Leak Detection Bore

Model	DN	Dimension Table (mm)								-
		A	B	C	D	E	F	G		
GD-J16B	16	110	16	40	46	63	40	35	KF	
GD-J25B	25	120	25	50	54	77	50	43	KF	
GD-J40B	40	151	40	65	74	102	60	61	KF	
GD-J50B	50	170	50	70	78	109	60	65	KF	

### Pneumatic Type



DNI16~50 Aluminum Body Pneumatic



- Mechanical Indicator
- Compressed Air Connection
- Module Components ( Standard )
- Leak Detection Bore

Model	DN	Dimension Table (mm)								-
		A	B	C	D	E	F	G		
GDQ-J16(B)	16	117	16	40	46	87.8	120.9	35	KF	
GDQ-J25(B)	25	123.5	25	50	54	100.8	127	43	KF	
GDQ-J40(B)	40	147	40	65	74	115.8	163	61	KF	
GDQ-J50(B)	50	163	50	70	78	129.8	187.4	65	KF	

## APPLICATION

Widely applied in semiconductor, photovoltaic, new energy, pharmaceutical, scientific research, laboratory, chemical, light industry, metallurgy, petroleum, machinery, electronics and other industries, as well as electric vacuum device manufacturing, light bulbs, vacuum flask manufacturing, vacuum welding, vacuum casting, instrumentation, printing and packaging machinery, etc.

## TECHNICAL PARAMETER

### GD Series HV Manual Valve Parameter

Model		GD-J16B	GD-J25B	GD-J40B	GD-J50B
DN	mm	16	25	40	50
Pressure range		Pa $1 \times 10^{-6}$ Pa ~ $5 \times 10^5$ Pa			
Pressure Differential	Opening Direction	Pa $1.2 \times 10^5$			
	Closure Direction	Pa $5 \times 10^5$			
Opening Pressure Differential		Pa $\leq 1.2 \times 10^5$ Pa Any Orientation			
Leak Rate		Pa · L/s $\leq 1.3 \times 10^{-7}$			
Switching Cycles		— 1 Million Times			
Conductance		L/s 4.5	L/s 14	L/s 45	L/s 80
Temperature		°C $\leq 120$			
Opening/Closure Time		s Manual Operation Time			
Position Indication		— Mechanical Indicator			
Installation Position		— Any			
Ambient Temperature		°C 5~40			

### GDQ Series HV Pneumatic Valve Parameter

Model		GDQ-J16(B)	GDQ-J25(B)	GDQ-J40(B)	GDQ-J50(B)
DN	mm	16	25	40	50
Pressure Range		Pa $1 \times 10^{-5}$ Pa ~ $5 \times 10^5$ Pa ( $1 \times 10^{-6}$ Pa ~ $5 \times 10^5$ Pa )			
Pressure Differential	Opening Direction	Pa $1.2 \times 10^5$			
	Closure Direction	Pa $5 \times 10^5$			
Opening Pressure Differential		Pa $\leq 1.2 \times 10^5$ Pa Any Orientation			
Leak Rate		Pa · L/s $\leq 1.3 \times 10^{-7}$			
Switching Cycles		— 1 Million Times			
Conductance		L/s 4.5	L/s 14	L/s 45	L/s 80
Temperature		°C $\leq 120$			
Power		— A/C 220V 50Hz or D/C 24V,3W,			
Opening/Closure Time		s $\leq 0.7$			
Compressed Air		MPa 0.4~0.7			
Position Indication		— Passive Switch Signal + Mechanical Indicator			
Installation Position		— Any			
Ambient Temperature		°C 5~40			

Note: ( B ) indicate Bellow sealed